



(11) **EP 3 372 146 A1**

(12) **EUROPEAN PATENT APPLICATION**  
published in accordance with Art. 153(4) EPC

(43) Date of publication:  
**12.09.2018 Bulletin 2018/37**

(51) Int Cl.:  
**A61B 5/00 (2006.01) G06Q 50/22 (2018.01)**

(21) Application number: **16912803.0**

(86) International application number:  
**PCT/RU2016/000748**

(22) Date of filing: **03.11.2016**

(87) International publication number:  
**WO 2018/030912 (15.02.2018 Gazette 2018/07)**

(84) Designated Contracting States:  
**AL AT BE BG CH CY CZ DE DK EE ES FI FR GB GR HR HU IE IS IT LI LT LU LV MC MK MT NL NO PL PT RO RS SE SI SK SM TR**  
Designated Extension States:  
**BA ME**  
Designated Validation States:  
**MA MD**

(72) Inventors:  
• **DIDENKO, Vladimir Andreevich**  
**Moscow 117152 (RU)**  
• **PARAFEYNIKOV, Igor' Vladimirovich**  
**Korolev 142090 (RU)**  
• **PASTUHOV, Boris Ivanovich**  
**Korolev 142090 (RU)**

(30) Priority: **10.08.2016 RU 2016133025**

(74) Representative: **Patentwerk B.V.**  
**P.O. Box 1514**  
**5200 BN 's-Hertogenbosch (NL)**

(71) Applicant: **Pastuhov, Boris Ivanovich**  
**Moscow 123104 (RU)**

(54) **METHOD AND SYSTEM OF MULTI-PARAMETER EVALUATION OF THE EFFECT OF THE ENVIRONMENT ON A PERSON**

(57) The invention relates to computing systems for predicting the condition of a person depending on environmental parameters, and more particularly to a method and system for evaluating the effect of weather, geomagnetic background and the air on the condition of a person's body. The method involves the input of personal data, including at least gender and age, by a computer device user (2); the determination or specification of a geolocation by said computer device user (2); the transmission of the user data, containing the personal data and the geolocation data, to a processing unit (4); the requesting of environmental forecast data from a weather server (5) by the processing unit (4), said data including forecast data about the weather, the geo-magnetic background and the air condition corresponding to the geolocation; the transmission of the forecast data to the processing unit (4) by the weather server (5); the transmission of the user and forecast data to an encoder (8) and the generation of a single hash code, containing the user and forecast data; the transmission of the hash code to a decoder (9) and the correlation of said code with a database (10) of dependencies of the functioning of human body systems on weather, geomagnetic background and air condition parameters; and the transmission of the correlated data to a display means (11) and the display of information about the effect of environmental parameters on the functioning of human body systems.

The technical result is an increase in the objectivity of forecast data, an increase in the operating speed of the system, a simplification of the structure of the said system, and an increase in the potential thereof as a result of the multi-parameter consideration of different parameters.

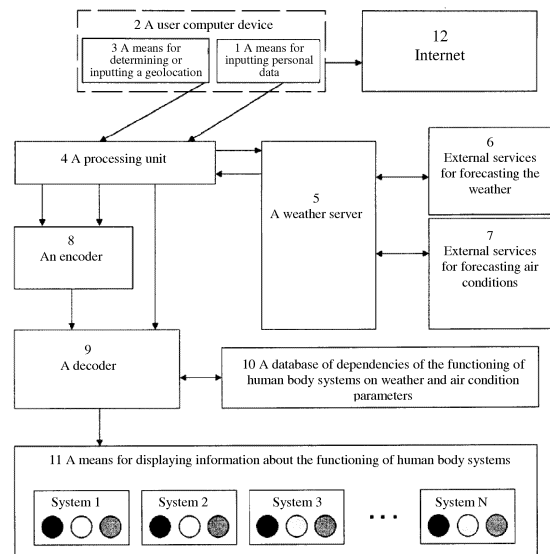


FIGURE 1

EP 3 372 146 A1

**Description****Field of the invention**

[0001] The invention relates to computing systems for predicting the condition of a person depending on environmental parameters, and more particularly to a method and system for evaluating the effect of weather, Earth's magnetic field (the geomagnetic background) and the air quality on the condition of a person's body (a computer device user).

**Prior art**

[0002] The closest analog of the claimed invention is an information system and method for notifying users about the effect of environment on the user health disclosed in the Patent of Japan JP59145988, 11.05.2016. This system includes: an information server comprising information about preceding ambulance calls and meteorological conditions, and configured to map the provided information with a database storing information about meteorological conditions and diseases; a data unit adapted to receive information about the environment at a user location; a generator accessing the database and obtaining information about the environment for each user, and a device transmitting information about a user disease. The data unit receives environmental data from news agencies. The generator generates the relevant information about an environmental effect on a person's body by comparing data about the meteorological conditions and diseases.

[0003] The drawback of this solution is in relatively poor possibilities since this solution uses only weather parameters. The analogous solution uses a degree of person's meteosensitivity, geomagnetic background, air quality and data about the presence of allergenic pollen in the air. In addition, the analogous solution doesn't provide with information about risks related to a cardiovascular system, food allergy, allergic rhinitis and a human musculoskeletal system.

[0004] Moreover, this solution doesn't provide a specific system operation algorithm. The system configuration described above doesn't enable processing multiple environmental parameters (only individual weather parameters are considered) and person's health factors including personal information and user location per operation, thus, complicating and slowing down the system operation. For instance, processing a request for a user having several health problems will take more time than in the case of a single problem. In addition, the more health problems a user has the more time is needed for cyclic processing.

**Disclosure of the invention**

[0005] It is an object of the present invention to enhance a therapeutic and preventive efficiency by inform-

ing a user about a likely effect of current and forecast weather parameters, geomagnetic background, and air quality on the functioning of different human body systems according to a degree of their meteosensitivity.

5 [0006] The technical result provided by the present invention is in an improved objectivity of forecast data, an improved system operating speed, a simplified configuration of the said system and an improved potential thereof as a result of the integration of different weather parameters, a geomagnetic background, and air quality.

10 [0007] Said technical result is achieved by the claimed method for multi-parameter evaluating an effect of environmental parameters on the functioning of human body systems by that it comprises inputting by a computer device user personal data which include at least gender and age, a degree of the meteosensitivity and a list of medical problems of a user, determining or specifying by said computer device user a geolocation, transmitting the user data containing personal and geolocation data to a processing unit, requesting by the processing unit the current and forecast environmental data from a weather server, wherein said data include forecast data about a weather, geomagnetic background and air condition according to the geolocation, a transmission of the forecast data to the processing unit by the weather server, transmitting the user and forecast data to an encoder and generating a single hash code containing the user and forecast data, transmitting the hash code to a decoder and correlating said code with a database of dependencies of a functioning of human body systems on weather, geomagnetic background and air condition parameters, transmitting the correlated data to a displaying means and displaying information about the effect of environmental parameters on the functioning of human body systems.

35 [0008] Said technical result is achieved by a system of multi-parameter evaluation of the effect of environmental parameters on a functioning of human body systems by that it comprises: a means for inputting personal data of a computer device user, said data includes at least gender and age, a means for determining or inputting a geolocation of the computer device user, a processing unit configured to communicate with a user computer device and receive a user data therefrom, said data includes personal and geolocation data, a weather server connected to a processing unit, external services for forecasting weather, geomagnetic background and air condition connected to the weather server so as to transmit environmental forecast data to the processing unit, said data includes forecast data about a weather, geomagnetic background and air condition according to a user geolocation, an encoder connected to the processing unit and configured to generate a single hash code comprising user and forecast data, a decoder connected to the encoder and configured to correlate the hash code with a database of dependencies of functioning of human body systems on environmental parameters, a database of dependencies connected to the decoder and contain-

ing a hash table of dependencies of the functioning of human body systems on weather, geomagnetic background and air condition parameters, and a means for displaying information about an effect of environmental parameters on the functioning of human body systems.

**[0009]** Furthermore, there are particular embodiments of the invention envisaged according to which:

- a user geolocation is determined by means of a navigation module of a computer device,
- user personal data is inputted by means of a computer device interface, wherein the user further inputs a degree of the meteosensitivity as the personal data,
- an air temperature, atmospheric pressure, air humidity, wind direction and power, precipitation type and intensity, atmospheric pressure dynamics for 12 hours and an ultraviolet index are used as weather forecast data,
- a background air pollution and presence of allergenic pollen in the air are used as forecast data about air condition,
- following disease groups are used as factors reflecting the functioning of the body systems: enhanced emotional lability, neurosis; acute respiratory diseases; tonsillitis, aggravation of chronic tonsillitis; acute pneumonia, pneumonia; acute intestinal diseases; allergic airway diseases; acute myocardial infarction and acute coronary syndrome; acute cerebrovascular accident, stroke; elevated blood pressure, hypertension; chronic ischemic heart disease, angina pectoris; cardiopsychoneurosis; migraine headache, migraine; heart rhythm disorder, arrhythmia; chronic upper respiratory tract diseases; chronic lung diseases, bronchitis; bronchial asthma; chronic gastrointestinal diseases; cholelithiasis and urolithiasis; chronic urinary tract diseases; chronic diseases of female sex organs; chronic joint diseases, arthritides; ocular hypertension, glaucoma; hay fever, grass pollen allergy,
- the information about the effect of environmental parameters on a body is displayed individually for each factor in the form of three conditions: extremely adverse parameters, adverse parameters, favorable parameters.

**[0010]** In contrast to the closest analog, the method and system according to the present invention allow including more parameters while maintaining high performance by the use of the system structure according to the present invention and an algorithm of its operation. In particular, the present invention uses an encoder to generate a single hash code comprising user and forecast data, thus, simplifying the correlation of parameters with the evaluation of the effect and accelerating the system operation by processing data in a single operation. The use of the hash coding provides convolution (correlation) of a full information set into a unique hash code, which

unambiguously identifies all possible person medical problems, associated with the full parameter set of weather, geomagnetic background, and air quality according to a degree of their meteosensitivity.

#### **Brief description of the drawings**

**[0011]** The invention is illustrated by the figure showing a schematic diagram of a system for evaluation of the environmental effect on a user body.

#### **Embodiments of the invention**

**[0012]** The claimed system for evaluation of the effect of environmental parameters includes a means (1) for inputting data of a computer device (2) user, a means (3) for determining or inputting a geolocation (a location) of the user, a processing unit (4), a weather server (5), external services for forecasting the weather and geomagnetic background (6) and air condition (7), an encoder (8), a decoder (9), a database (10) of dependencies of the functioning of human body systems on environmental parameters (weather, geomagnetic background and air), and a means (11) for displaying an effect of said parameters on the functioning of a person's body by each individual system (disease group).

**[0013]** The user computer device (2) (a terminal) can be a smartphone, a tablet, a PC, etc. configured to communicate data via the Internet (12). The means (1) for inputting user personal data can be implemented in the form of a software interface of the computer device (2). The means (3) for determining or inputting a geolocation can be an interface element for data input or a navigation module (GPS, Glonass, etc.) for automatically locating a user location which can be or can't be a component of the computer device (2).

**[0014]** The processing unit (4) is connected to the computer device (2) and controls the device. The weather server (5) is connected to the processing unit and is responsible for requesting and pre-processing data about a weather, geomagnetic background and air condition in a specific geolocation according to the information obtained from the external services (6) and (7). The encoder (8) is connected to the processing unit (4) and generates a hash code according to the user and forecast data. The decoder (9) is connected to the encoder (8) and maps the hash code received from the encoder having a database (10) storing a hash table of dependencies of the functioning of different human body systems on different weather, geomagnetic background and air parameters, and in case of a match it selects the information related to the information of the selected hash code and transforms it into a view ready to be displayed. The means (11) for displaying receives data from the decoder (9) and visualizes estimation results.

**[0015]** The method for multi-parameter evaluating the effect of weather, geomagnetic background and air condition parameters on the functioning of different human

body systems is based on the usage of the following main environmental parameters:

For weather:

- air temperature,
- atmospheric pressure,
- air humidity,
- wind direction and power,
- precipitation type and rate,
- atmospheric pressure dynamics for 12 hours,
- UV-index (describing the level of ultraviolet solar radiation on the Earth's surface).

For air:

- background air pollution,
- presence of allergenic pollen in the air.

**[0016]** Based on analysis of results of biometeorology studies, it is defined following disease groups (or individual diseases) for human body, wherein the weather, air and geomagnetic background parameters may effect on their appearance and progression:

- enhanced emotional lability, neurosis (influenced by barometric pressure value and dynamics, geomagnetic background),
- acute respiratory diseases (influenced by ambient temperature, barometric pressure value, humidity, the presence of rainfall);
- tonsillitis, aggravation of chronic tonsillitis (influenced by ambient temperature, barometric pressure value);
- acute pneumonia, pneumonia (influenced by ambient temperature, humidity, air quality index);
- acute intestinal diseases (influenced by ambient temperature, barometric pressure value);
- allergic airway diseases (influenced by barometric pressure value, humidity, air quality index);
- acute myocardial infarction and acute coronary syndrome (influenced by barometric pressure value and dynamics, geomagnetic background, air quality index);
- acute cerebrovascular accident, stroke (influenced by barometric pressure value and dynamics, geomagnetic background, air quality index);
- elevated blood pressure, hypertension (influenced by ambient temperature, barometric pressure value and dynamics, air humidity, geomagnetic background, air quality index);
- chronic ischemic heart disease, angina pectoris (influenced by ambient temperature, barometric pressure value and dynamics, geomagnetic background, air quality index);
- cardiopsychoneurosis (influenced by barometric pressure value and dynamics, geomagnetic background);

- a migraine headache, migraine (influenced by barometric pressure value and dynamics, geomagnetic background);
- heart rhythm disorder, arrhythmia (influenced by barometric pressure value and dynamics, geomagnetic background);
- chronic upper respiratory tract diseases (influenced by ambient temperature, humidity, the presence of rainfall, air quality index);
- chronic lung diseases, bronchitis (influenced by ambient temperature, barometric pressure value and dynamics, humidity, the presence of rainfall, air quality index);
- bronchial asthma (influenced by ambient temperature, barometric pressure value and dynamics, humidity, air quality index);
- chronic gastrointestinal diseases (influenced by ambient temperature, barometric pressure value and dynamics);
- cholelithiasis and urolithiasis (influenced by ambient temperature, barometric pressure value, the presence of rainfall);
- chronic urinary tract diseases (influenced by ambient temperature, humidity, the presence of rainfall);
- chronic diseases of female sex organs (influenced by ambient temperature, humidity, the presence of rainfall);
- chronic joint diseases, arthritides (influenced by ambient temperature, barometric pressure dynamics, humidity, the presence of rainfall);
- ocular hypertension, glaucoma (influenced by ambient temperature, barometric pressure value and dynamics, humidity);
- hay fever, grass pollen allergy (influenced by flowering calender of different allergenic plants and herbs in a distribution area thereof, wind direction and strength, the presence of rainfall).

**[0017]** Preferably, all the values of the weather, geomagnetic background and air parameters are divided into ranges consisting of three groups:

- increased values of parameters relative to normal values;
- normal values of parameters;
- decreased values of parameters relative to normal values.

**[0018]** Based on the data about the effect of the weather, geomagnetic background and air parameters on the functioning of different human body systems and three groups of parameter ranges, a hash table of dependencies of the functioning of different human body systems from values of weather and air parameters is created and is stored in a database (10). It should be noted, that particular dependencies of the effect of changing certain environmental parameters on a body condition are known to those skilled in the biometeorology so that this infor-

mation is not described herein.

**[0019]** Correction factors may be introduced for the normal values of weather parameters, wherein said factors are associated with Earth's climate zones (the values for the normal weather parameters vary for different climate zones).

**[0020]** According to the method of the present invention, a user initiates by means of the computer device (2) reading and sending data about their location using the means (3) (for example, a GPS module of a smartphone). Furthermore, the user may input geolocation information manually. Furthermore, the user transmits personal data, including gender, age and, if necessary, a degree of meteosensitivity using an interactive interface (an input means 1). The personal data also can include additional parameters, for example, information about a susceptibility to certain diseases etc. The data received from the user containing personal and geolocation data is transmitted to a processing unit.

**[0021]** The processing unit (4) determines the climate zone at the user location and transmits this information about the user geolocation to a weather server (5), which requests forecast and/or current data about current weather conditions, geomagnetic background and air in the user location (or location of interest) from the external services (6) and (7). Then, an encoded signal from the weather server (5) comprising information about a weather forecast, geomagnetic background and air condition is transmitted to the processing unit (4).

**[0022]** The processing unit (4) transmits signals with the user and forecast data to an encoder (8) input. The encoder (8) generates a single hash code based on input signals, said code comprises user personal data, geolocation data and current weather, geomagnetic background and air parameters. Then, the hash code is transmitted to a decoder (9), which correlates, according to a signal (a command) from the processing unit (4), the received hash code with the database of dependencies of the functioning different human body systems from environmental parameters (weather, geomagnetic background and air parameters) according to the hash table.

**[0023]** Encoding results are transmitted to the means (11) for displaying an effect of current weather, geomagnetic background and air parameters on the functioning of different human body systems.

**[0024]** The principle of displaying the effect of the parameters may be based on displaying three conditions for each body system or disease group: extremely adverse parameters of weather, geomagnetic background and air; adverse parameters; favorable parameters.

Example

**[0025]** A user inputs following parameters by means of the computer device:

- gender: male;
- age: over 36 years;

- a degree of meteosensitivity: medium;
- medical problems, associated with: hay fever and hypertension.

5 **[0026]** According to the geolocation data of the computer device, the user is in a 5th climate zone (normal values of weather parameters specific to this climate zone will be used based on this information).

10 **[0027]** Based on the user personal and biometeorology data, the following disease groups (or individual diseases) for a given person will be defined, wherein the weather, air and geomagnetic background parameters can impact appearance and progression of the diseases:

- 15 - enhanced emotional lability, neurosis;
- acute respiratory diseases;
- tonsillitis, aggravation of chronic tonsillitis;
- acute pneumonia, pneumonia;
- acute intestinal diseases;
- 20 - allergic airway diseases;
- acute myocardial infarction and acute coronary syndrome;
- acute cerebrovascular accident, stroke;
- elevated blood pressure, hypertension;
- 25 - chronic ischemic heart disease, angina pectoris;
- cardiopsychoneurosis;
- a migraine headache, migraine;
- heart rhythm disorder, arrhythmia;
- chronic upper respiratory tract diseases;
- 30 - chronic lung diseases, bronchitis;
- bronchial asthma;
- chronic gastrointestinal diseases;
- cholelithiasis and urolithiasis;
- chronic urinary tract diseases;
- 35 - chronic joint diseases, arthritides,
- ocular hypertension, glaucoma;
- hay fever, grass pollen allergy.

40 **[0028]** Upon request of weather and air condition data, the following information was obtained:

- air temperature - 28,
- atmospheric pressure - 760 mm Hg,
- humidity - 71%,
- 45 - atmospheric pressure dynamics for last 12 hours - 0,
- rainfalls,
- geomagnetic background - disturbed,
- UV-index - 6,
- a high pollen concentration of weeds (nettle, wormwood etc.) and fungal spores (cladosporium, alternaria) in a user geolocation in the 5th climate zone,
- 50 - an AQI (air quality index) - 56.82756.

55 **[0029]** The user data and received data about the weather forecast, geomagnetic background and air condition are transmitted to the encoder which convolves (transforms) it into a hash code. Thereafter, upon a processing unit signal, the hash code is transmitted to

the decoder. Then, according to transmitted hash code a record is retrieved from the database, said record associates the hash code with potential risks of the functioning of different human body systems based on a user's degree of meteosensitivity.

**[0030]** With respect to the aforementioned user data and data received from the weather server, the user obtains the following information which can be displayed by the means for displaying information:

- Enhanced emotional lability, neurosis (influenced by geomagnetic background) - a "yellow" condition indicator, recommendations associated with the health condition include the following:  
"Enhanced emotional lability, low mood, decreased performance and even a headache and pain in the heart area can be expected today. Compliance with the work and rest schedule together with a good sleep may help to overcome said negative effects. Take a walk in the open air before going to bed. In case of prescribed sedative, make sure you take it carefully."
- Acute respiratory diseases (influenced by ambient temperature, humidity, the presence of rainfall) - a "yellow" condition indicator, recommendations associated with the health condition include the following:  
"The weather promotes the development of an acute respiratory disease. Symptoms can include a high temperature, cough, rhinitis. As a precaution to not to get sick, avoid contacting people with said symptoms, get dressed according to the weather and keep your feet dry."
- Tonsillitis, aggravation of chronic tonsillitis - a "green" condition indicator, recommendations associated with the health condition include the following:  
"Today the risk of getting acute tonsillitis or aggravation of chronic tonsillitis is low. However, be always careful with cold drinks and ice cream!"
- Acute pneumonia, pneumonia - a "green" condition indicator, recommendations associated with the health condition include the following:  
"Today's weather doesn't promote acute pneumonia and bronchitis. Make a healthy and active lifestyle!"
- Acute intestinal diseases - a "green" condition indicator, recommendations associated with the health condition include the following:  
"Today the risk of appearance of acute intestinal diseases is low. But you always have to maintain personal hygiene!"
- Allergic airway diseases (influenced by humidity, air quality index) - a "yellow" condition indicator, recommendations associated with the health condition include the following:  
"Today's weather is not favorable for people having allergic airway diseases. It is better to mop in your room. It is recommended to wash your nose with still mineral water before going outdoors. For people having an allergy, it is better to avoid eating chocolate, citrus fruits, and other allergenic products."

- Acute myocardial infarction and acute coronary syndrome (influenced by geomagnetic background, air quality index) - a "yellow" condition indicator, recommendations associated with the health condition include the following:  
"The risk of development of acute coronary syndrome, including acute myocardial infarction, is increased. It is recommended to avoid superfluous stresses and emotions. Take the medical preparations enhancing heart performance, if prescribed by the physician. In the case of spasm of intense pain in a chest region or sudden dyspnea, immediately seek medical help."
- Acute cerebrovascular accident, stroke (influenced by geomagnetic background, air quality index) - a "yellow" condition indicator, recommendations associated with the health condition include the following:  
"The risk of development of acute cerebrovascular accident is increased today. Continuously monitor your blood pressure level. Try to avoid stresses and superfluous emotions. Carefully take the medical preparations, in particular, those that effect on blood pressure and blood coagulability, if prescribed."
- Elevated blood pressure, hypertension (influenced by air humidity, geomagnetic background, air quality index) - a "yellow" condition indicator, recommendations associated with the health condition include the following:  
"The increased risk of decompensation of arterial hypertension is increased today. If you have such problem, you should monitor your pressure level at least twice a day. Try to avoid superfluous nerves and stresses, avoid overeating and limit salt intake to 2 g a day. If you are prescribed with medical preparations which reduce blood pressure, don't forget to take it carefully".
- Chronic ischemic heart disease, angina pectoris; (influenced by geomagnetic background, air quality index) - a "yellow" condition indicator, recommendations associated with the health condition include the following:  
"The weather increases the frequency of anginal attacks and promotes aggravation of chronic ischemic heart disease. If you have such disease try to avoid excessive physical activities. Also, avoid overeating. Take all medical preparations prescribed by a physician and keep nitroglycerin at hand.";
- Cardiopsychoneurosis (influenced by geomagnetic background) - a "yellow" condition indicator, recommendations associated with the health condition include the following:  
"The risk of feeling unwell for people having cardiopsychoneurosis is increased today. It can take forms of fluctuations of blood pressure, accompanied by weakness, headache, a pain in the heart area and other clinical implications of this disease. You should take at least 2 glasses of liquid more than usually. Try to comply a work and rest schedule."
- A migraine headache, migraine (influenced by geomagnetic background) - a "yellow" condition indica-

- tor, recommendations associated with the health condition include the following: "The risk of development of migraine attack is increased. To prevent it try to get enough sleep, avoid planning serious business for today and limit your physical activity. Follow moderate eating: avoid fatty and fried food, instead eat fish and sea fruits. Also, drink more liquid, such as mineral water and juices. If you have such problem, keep medical preparations for headaches at hand. The most efficient way is to take the medical preparations at the beginning of the attack, don't stand the pain."
- Heart rhythm disorder, arrhythmia (influenced by geomagnetic background) - a "yellow" condition indicator, recommendations associated with the health condition include the following: "The risk of development of cardiac arrhythmia is increased today, such as improper heart performance and episodes of the improper or fast heartbeat. If you have such problem, keep medical preparations which help you in such situations at hand. If they don't have a positive effect, immediately seek a physician or call an ambulance."
  - Chronic upper respiratory tract diseases (influenced by humidity, the presence of rainfall, air quality index) - a "yellow" condition indicator, recommendations associated with the health condition include the following: "The risk of development of aggravation of chronic upper respiratory tract diseases is increased today. It can be accompanied by appearance or aggravation of dry heavy cough. To prevent aggravation, get dressed according to the weather and keep dry your clothes and in particular your footwear. Avoid overloading your vocal cords."
  - Chronic lung diseases, bronchitis - a "green" condition indicator, recommendations associated with the health condition include the following: "It is a favorable weather for people having chronic bronchitis. We wish you a good day and light breathing!";
  - Bronchial asthma - a "green" condition indicator, recommendations associated with the health condition include the following: "It is a favorable weather for people having bronchial asthma. We wish you a good day and light and free breathing!"
  - Chronic gastrointestinal diseases - a "green" condition indicator, recommendations associated with the health condition include the following: "It is a favorable weather for people having chronic gastrointestinal diseases. We wish you a nice meal!"
  - Cholelithiasis and urolithiasis - a "green" condition indicator, recommendations associated with the health condition include the following: "It is a favorable weather for people having kidney stones and gallstones. We wish you a good day and success in all undertakings!"
  - Chronic urinary tract diseases (influenced by ambient temperature, humidity, the presence of rainfall) - a "yellow" condition indicator, recommendations associated with the health condition include the following: "The risk of development of aggravation of chronic inflammatory kidney and urinary tract diseases is increased today. To prevent it keep your waist area warm. Pay attention to keep dry your clothes and, in particular, footwear. Keep your legs warm."
  - Chronic joint diseases, arthritides (influenced by ambient temperature, humidity, the presence of rainfall) - a "yellow" condition indicator, recommendations associated with the health condition include the following: "The risk of aggravation of spine and joint diseases, as well as pains therein today. Try to keep your joints warm and avoid excessive physical activities. Keep your legs always dry and warm. Try not to overload affected joints. You can take anti-inflammatory medicine in ointment and application forms.";
  - Ocular hypertension, glaucoma - a "green" condition indicator, recommendations associated with the health condition include the following: "It is a favorable weather for people having ocular hypertension. We wish you to see the world in all the diversity of its colors!"
  - Hay fever, grass pollen allergy (influenced by flowering calendar of different allergenic plants and herbs in a distribution area thereof, wind direction and strength, the presence of rainfall) - a "red" condition indicator, recommendations associated with the health condition include the following: "Attention! There is a high pollen concentration of nettle, wormwood, meadow grasses, mushroom spores in the air, which may adversely impact your health. Rainfalls reduce the pollen concentration in the air. Avoid eating products which can cause a cross-feeding response, in particular, during a period of allergenic plant flowering. Regularly wash your nasal cavity to wash out allergens, in particular, after getting off the street. Where possible, you should go to another climate zone, where allergenic plants flower during another time period or where they are absent. To relief the symptoms of allergy take anti-allergic medicine according to the physician prescription."
- [0031]** Therefore, a user may operatively receive relevant information about the effect of the environmental parameters on the functioning of separate body systems.
- [0032]** The disclosed system can be embodied as an application for a mobile device or a personal computer.
- 50 Claims**
1. A method for multi-parameter evaluating an effect of environmental parameters on a functioning of human body systems using a computer device (2), including:
    - inputting by a computer device (2) user personal data which include at least gender and

- age,  
 - determining or specifying by the said computer device (2) user a user geolocation,  
 - transmitting the user data containing personal and geolocation data to a processing unit (4),  
 - requesting by the processing unit (4) the environmental forecast data from a weather server (5), said data including forecast data about the weather, geomagnetic background and air condition, corresponding to the geolocation,  
 - transmitting the forecast data to the processing unit (4) by the weather server (5),  
 - - transmitting the user and forecast data to an encoder (8) and generating a single hash code containing the user and forecast data,  
 - transmitting the hash code to a decoder (9) and correlating said code with a database (10) of dependencies of a functioning of human body systems on weather, geomagnetic background and air condition parameters,  
 - transmitting the correlated data to a displaying means (11) and displaying information about an effect of environmental parameters on the functioning of human body systems.
2. The method of claim 1, wherein the user geolocation is determined by means of a navigation module of the computer device.
  3. The method of claim 1, wherein the user personal data are input by means of an interface of the computer device.
  4. The method of claim 1, wherein the user further inputs a degree of the meteosensitivity as the personal data.
  5. The method of claim 1, wherein an air temperature, an atmospheric pressure, an air humidity, a wind direction and strength, a rainfall type and intensity, atmospheric pressure dynamics for 12 hours and an ultraviolet index are used as forecast data about the weather.
  6. The method of claim 1, wherein a background air pollution and presence of allergenic pollen in the air are used as forecast data about air condition.
  7. The method of claim 1, wherein the weather server uses external services for forecasting the weather, geomagnetic background and air condition in order to determine the forecast data.
  8. The method of claim 1, wherein following disease groups are used as factors reflecting the functioning of the body systems:
    - enhanced emotional lability, neurosis,
    - acute respiratory diseases,
    - tonsillitis, aggravation of chronic tonsillitis,
    - acute pneumonia, pneumonia,
    - acute intestinal diseases,
    - allergic airway diseases,
    - acute myocardial infarction and acute coronary syndrome,
    - acute cerebrovascular accident, stroke,
    - elevated blood pressure, hypertension,
    - chronic ischemic heart disease, angina pectoris,
    - cardiopsychoneurosis,
    - a migraine headache, migraine,
    - heart rhythm disorder, arrhythmia,
    - chronic upper respiratory tract diseases,
    - chronic lung diseases, bronchitis,
    - bronchial asthma,
    - chronic gastrointestinal diseases,
    - cholelithiasis and urolithiasis,
    - chronic urinary tract diseases,
    - chronic diseases of female sex organs,
    - chronic joint diseases, arthritides,
    - ocular hypertension, glaucoma,
    - hay fever, grass pollen allergy.
  9. The method of claim 8, wherein the information about the effect of environmental parameters on the body is displayed individually for each factor in the form of three conditions: extremely adverse parameters, adverse parameters, favorable parameters.
  10. A system of multi-parameter evaluation of an effect of environmental parameters on a functioning of human body systems using a computer device, including:
    - a means (1) for inputting personal data of a computer device (2) user, said data include at least gender and age,
    - a means (3) for determining or inputting a geolocation of the computer device user (2),
    - a processing unit (4) configured to communicate with the user computer device (2) and receive user data therefrom, said data include personal data and geolocation data,
    - a weather server (5) connected to the processing unit,
    - external services for forecasting the weather (6), geomagnetic background and air condition (7) connected to the weather server (5) so as to transmit environmental forecast data to the processing unit (4), said data including forecast data about the weather, geomagnetic background and air condition corresponding to the user geolocation,



- an encoder (8) connected to the processing unit and configured to generate a single hash code containing the user and forecast data,
  - a decoder (9) connected to the encoder and configured to correlate the hash code with a database of dependencies of a functioning of human body systems on the environmental parameters,
  - a database (10) of dependencies connected to the decoder and containing a hash table of dependencies of the functioning of human body systems on weather, geomagnetic background and air condition parameters,
- - a means (11) for displaying information about the effect of the environmental parameters on the functioning of human body systems.
- 11.** The system of claim 10, wherein the means (11) for displaying the effect of the weather parameters on the functioning of human body systems is configured to display the effect of the parameters in the form of three conditions: extremely adverse parameters, adverse parameters, favorable parameters.
- 12.** The system of claim 10, wherein the means (3) for determining or inputting a geolocation is configured as a navigation module of the computer device.
- 13.** The system of claim 10, wherein the means (3) for determining or inputting a geolocation is configured as a software interface for inputting parameters of the geolocation.

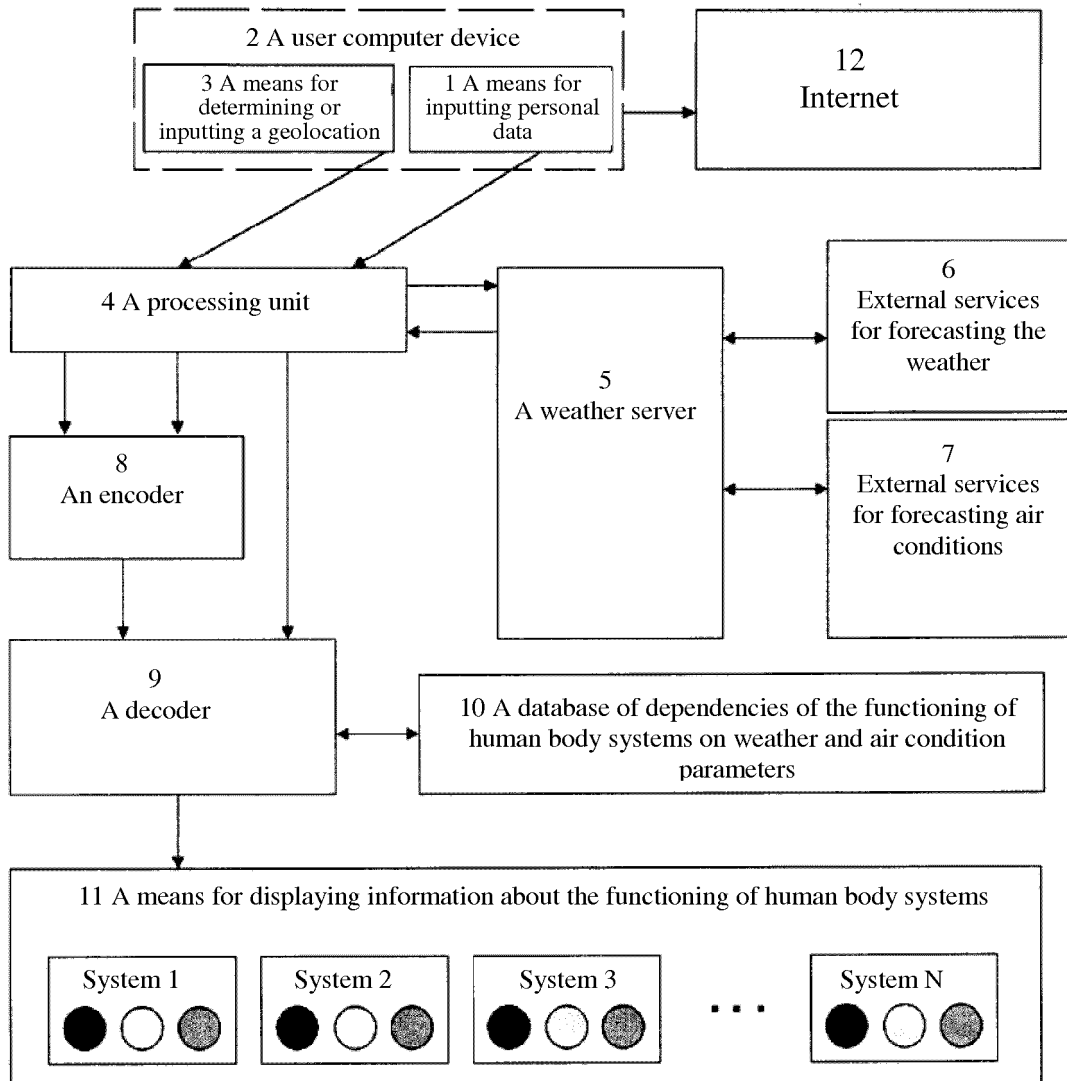


FIGURE 1

## INTERNATIONAL SEARCH REPORT

International application No. PCT/RU 2016/000748
---

5	A. CLASSIFICATION OF SUBJECT MATTER	
	A61B 5/00 (2006.01) G06Q 50/22 (2012.01)	
	According to International Patent Classification (IPC) or to both national classification and IPC	
	B. FIELDS SEARCHED	
10	Minimum documentation searched (classification system followed by classification symbols)	
	A61B 5/00, G06Q 50/22, H04L 9/00	
	Documentation searched other than minimum documentation to the extent that such documents are included in the fields searched	
15	Electronic data base consulted during the international search (name of data base and, where practicable, search terms used)	
	Information Retrieval System of FIPS, EAPATIS, USPTO, Patentscope, Esp@cenet, PubMed, Elibrary, Yandex, Google	
	C. DOCUMENTS CONSIDERED TO BE RELEVANT	
20	Category*	Citation of document, with indication, where appropriate, of the relevant passages
		Relevant to claim No.
25	Y	JP 2016148517 A (KYUSHU UNIV) 18.08.2016, abstract, paragraphs [0006] - [0010], [0013], [0019], [0022], [0023], [0027], [0033], [0036], [0038], [0040],[0044] - [0046], [0052], [0079], [0087], [0090], [0092], [0093]
		1-13
30	Y	US 2001/0034839 A1 (GUENTER KARJOTH et al.) 25.10.2001, abstract, paragraphs [0122] - [0123]
		1-13
35	Y	RU 25991 U1 (OOO NAUCHNO-PROIZVODSTVENNOE PREDPRIIATIE "NEO") 10.11.202, p. 2-4, 6
		6, 8
40	<input type="checkbox"/> Further documents are listed in the continuation of Box C. <input type="checkbox"/> See patent family annex.	
45	* Special categories of cited documents:	"T" later document published after the international filing date or priority date and not in conflict with the application but cited to understand the principle or theory underlying the invention "X" document of particular relevance; the claimed invention cannot be considered novel or cannot be considered to involve an inventive step when the document is taken alone "Y" document of particular relevance; the claimed invention cannot be considered to involve an inventive step when the document is combined with one or more other such documents, such combination being obvious to a person skilled in the art "&" document member of the same patent family
	"A" document defining the general state of the art which is not considered to be of particular relevance	
	"E" earlier application or patent but published on or after the international filing date	
	"L" document which may throw doubts on priority claim(s) or which is cited to establish the publication date of another citation or other special reason (as specified)	
	"O" document referring to an oral disclosure, use, exhibition or other means	
	"P" document published prior to the international filing date but later than the priority date claimed	
50	Date of the actual completion of the international search	Date of mailing of the international search report
	21 March 2017 (21.03.2017)	20 April 2017 (20.04.2017)
55	Name and mailing address of the ISA/ Facsimile No.	Authorized officer Telephone No.

**REFERENCES CITED IN THE DESCRIPTION**

*This list of references cited by the applicant is for the reader's convenience only. It does not form part of the European patent document. Even though great care has been taken in compiling the references, errors or omissions cannot be excluded and the EPO disclaims all liability in this regard.*

**Patent documents cited in the description**

- JP 59145988 B [0002]